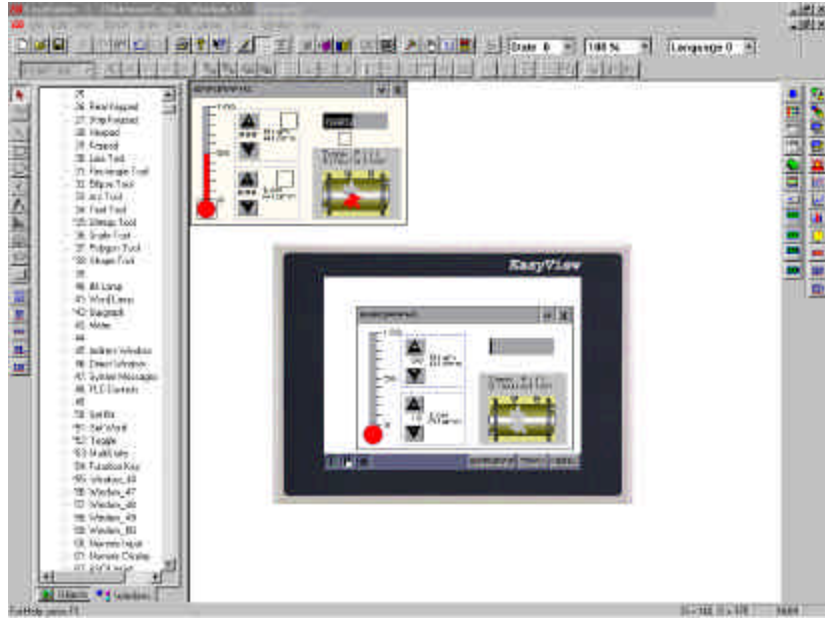


Other convenient features include: The ability to copy windows and objects between projects. Windows can be stacked (overlapped) to reduce duplicate objects. Tags can be assigned to Data points for easy reference during project development. Labels that change depending on language use can also be incorporated into the project giving it international compatibility. Macro scripts can be triggered by bit actions to perform calculations, data manipulation and logical operations. Up to 256 scripts can be programmed into the unit. The ability to put a system bar (Taskbar) at the bottom of the screen to emulate familiar graphic interface operations.

After completing a project it can be simulated off-line to view approximately how your project will look and respond. There is also an on-line simulation. Connect the PC to your MMI unit and connect the MMI to your PLC. The MMI display is emulated on the PC screen by using the MMI as a bridge to go to your PLC. The PC will mimic exactly how the MMI will respond once the project is downloaded.

To download a project, connect the MMI-720/750 to COM1 or COM2 port of your PC using the download cable provided with the unit. Execute the download function, it will directly transfer your project data to the MMI-720/750's flash memory.



The Ethernet Option package includes expanded memory, a compact card memory slot, an additional printer port and a 10 baseT ethernet port. The compact card slot allows a user to update the project in a unit without connecting a computer or some other programming device. The printer port can be used to print out screen captures and event or alarm information. The ethernet port can be used for unit to unit communications or Modbus TCP/IP communications to controllers.

ORDERING INFORMATION:

Part Number Description

MMI-720 Graphic Interface with 5.7" blue, 4 grey scale, LCD display and Touchscreen

MMI-750 Graphic Interface with 5.7" STN, 256 color, LCD display and Touchscreen

MMI-750T Graphic Interface with 5.7" TFT, 256 color display & touchscreen

Options:

ETH Built in Ethernet (MMI-750 or MMI750T only)

HB Enhanced display for daylight viewing (MMI750T only)