

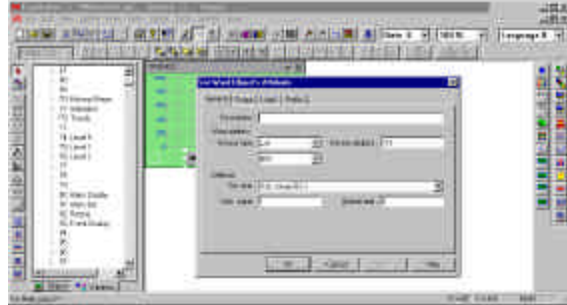
Easy Setup with EasyBuilder Software

EasyBuilder is a graphics editor software program for configuring the MMI Series. EasyBuilder can be downloaded for free from KEP's website (www.kep.com). Typical projects are composed of user defined windows. Each window is composed of a variety of elements called objects. There are drawing objects or putting static text and graphics on the window and Part objects for putting active objects on a window. PLC controlled objects can be used for window control and system functions.

Configuration of the MMI-720/750 is easy. To setup objects, select an icon from the toolbox, a dialog box appears. Fill in object attributes requested by the dialog to complete the object setup process. Move the object to the right position and drag the boundary of the object. It's a straightforward, simple, and consistent process.

Animation Tools:

- Bit Lamp – Place an indicator that is bit triggered
- Word Lamp – Place an indicator that is word triggered
- Set Bit – Set a bit
- Set Word – Set a word
- Toggle Switch – Toggle a bit
- MultiState Switch – Increment/Decrement a word
- Function Button – Perform a system operation
- Numeric Input Extend – Display/Change digital data
- Numeric Display – Display digital data
- ASCII Input Extend – Display/Change alphanumeric data
- ASCII Display – Display alphanumeric data
- X,Y Move Animation – Move an object via pixel coordinates
- Spot Move Animation – Move an object on a predefined path
- Direct Window - Popup Window on Bit
- Popup Window on Register
- Alarm Display
- Trend Graph
- XY Plot
- BarGraph
- Meter
- Scrolling Alarm
- Event Display
- Recipe Transfer (requires option card)
- PLC Controls: Screen, backlight, printer
- Data Transfer



Graphics can be produced by using the EasyBuilders own set of drawing tools. You can import any 256 color BMP format graphic into EasyBuilder to customize your application. Screen Captures and Graphics may also be cut and pasted into Paintbrush for conversion to the BMP format. Libraries with over 300 commonly used graphics are included with EasyBuilder Software. These libraries can be edited and new libraries created to hold new graphics you have created.

Drawing Tools:

- Line – Draw straight lines
- Rectangle – Draw squares and rectangles
- Ellipse – Draw circles and ellipses
- Arc – Draw 90-degree arcs
- Polygon – Draw multisided objects
- Text – Place static text
- Scale – Place lines at regular intervals
- Shape – Place a static shape from a library
- Bitmap - Place a static bitmap from a library

