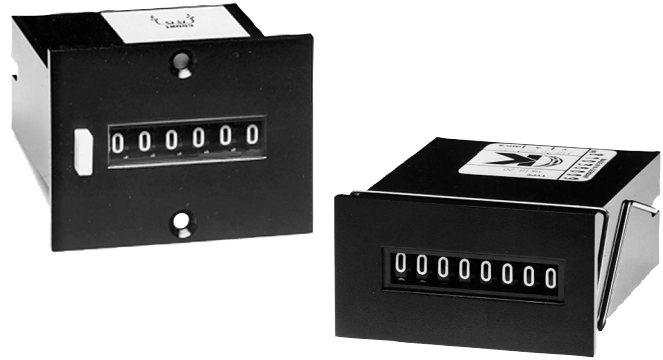


MK16 - 18

Electromechanical Totalizers 3, 4, 6 and 8 Digit

Features

- UL Listed, CE Certified
- Rugged Case
- Varied Mounting Styles
- 3, 4 and 6 Digits with Manual & Electric Reset
- Many Standard Voltages
- 250 Million Count Life, Minimum
- Many Options Available



Application:

Production counting, line counting (printers), events, fees, where count must be retained even if power is lost.

Description:

MK counters combine extra long count life, 250 million minimum, and absolute accuracy even with 10% voltage variation. Varied mounting styles. The spring clip mount gives the user a clean uncluttered panel. Installation is expedited by 0.020" x 0.11" quick push on connectors.

Count Input:

Voltage	Count Per Sec.	Time In Millisec On	Time In Millisec Off	Pulse Ratio	Power Consumption	
					Count	Reset
DC	10	50	50	1:1	1.2 W	9 W
	25	24	16	3:2	2 W	
	35	17	11	3:2	5.5 W	
AC	10	50	50	1:1	3 VA	14 VA
	18	27	27	1:1	3 VA	

Specifications:

Display: 6 digit with manual or electric reset; 8 Digit without reset

Digits: .160" white on black wheels.

Operating Voltages:

5, 6, 12, 24, 48, 110, 220 VDC;
12, 24, 48, 110, 220 VAC

Count Speed: 10, 25, 35 CPS standard VDC (40 or 50 CPS optional, see OPTIONS); 10, 18 CPS standard VAC only.

Temperature: +14°F to +114°F (-10°C to +45°C) standard

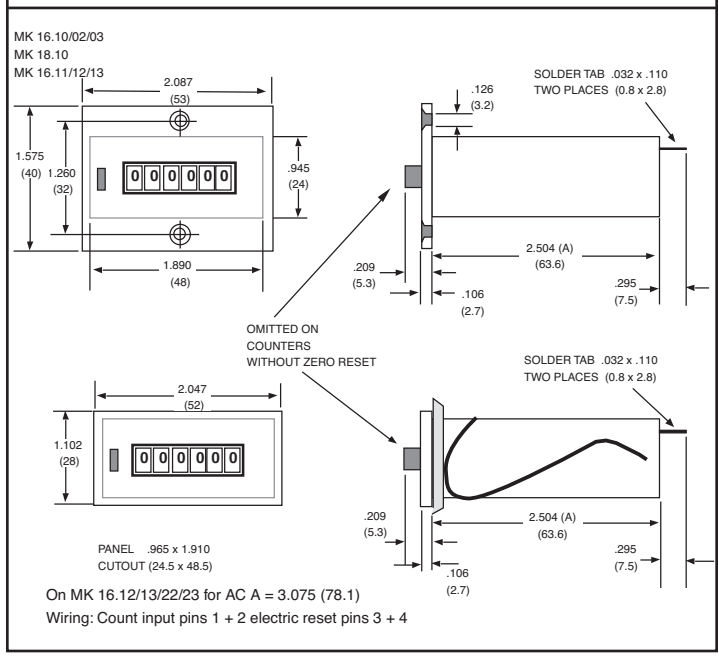
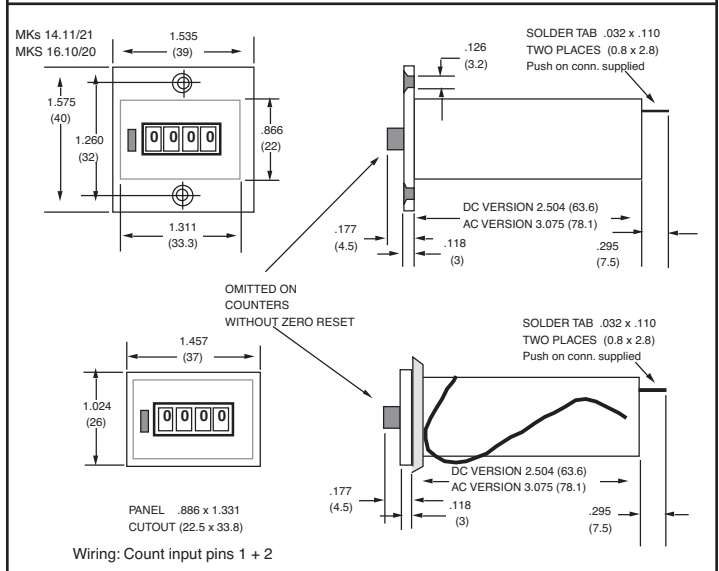
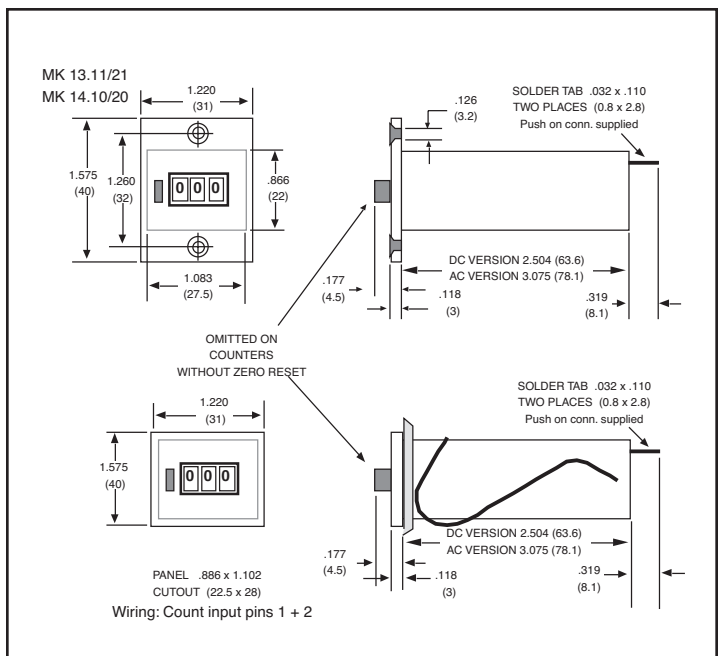
Housing: UL Listed, rugged, black, polycarbonate

Termination: Terminal pins 0.110" x 0.032 connectors supplied

Weight: 3 ounces

Max. Count Time: Continuous, 50/50 or 60/40 on/off pulse ratio.

Approvals: UL File#: E60420, CE Approved



How To Order

EXAMPLE: MK16 1 2 24 VDC 25 CPS

Series	_____	_____	_____	_____
MK14 = 4 digits with reset (1.32" wide cut out) MKS16 = 6 digits non reset (Consult Factory) MK16 = 6 digits with/without reset (1.89" wide cut out) MK18 = 8 digits non reset (1.89" wide cut out)				
Mounting	_____	_____	_____	_____
0 = Rear mount 1 = Screw panel 2 = Spring clip				
Reset	_____	_____	_____	_____
0= Non-reset 1 = Manual push button 2 = Electric (6 digit only) 3 = Both (6 digit only)				
Voltages (specify)	_____	_____	_____	_____
5, 6, 12, 24, 48, 110 and 220 VDC 12, 24, 48, 110 and 220 VAC				
Count Speeds (specify)	_____	_____	_____	_____
10, 25, 35 CPS DC 10, 18 CPS AC				

Available Options (add to end of part number)

- V - Manual reset guard (6 digit version)
- US - Spade key reset (6 digit version)
- SR - Secret reset (6 digit version)
- SL - Manual subtract lever (one count per stroke)
- ML - Magnifying lens
- M - SPDT microswitch operated by manual or electric reset (MK16.11/M)
- FL - 6" wire leads
- LT - Low temperature (-22°F to +115°F)
- HT - High temperature (+14°F to +140°F)
- 40 or 50 counts per second (DC only)
- Counts by 2's or 5's
- TB - Terminal block
- Z - Mounting stud (rear)
- Reverse Color Wheels-black on white, red on black
- Special engraving - faceplate
- K6 - Flexible silicone cover for #2 mount style
- A - Base mount ex: AMK 16.01
- K4 - Silicone Cover (mK14.21)

ENCLOSURES:

- N7 - Explosion proof (see accessories section)
- N12 - Oil and dust proof
- N4 - Weather and water proof
- Add "R" for external Reset Button (Unit must be ordered with Electric Reset)