

M Series

Features

- All Standard Voltages
- Electric, Manual, or Non-Reset Available
- Varied Resolutions Available
- Varied Mounting Styles
- Many Options Available

Description:

The M Series hours, minutes and seconds timer offers more voltages, reset options and more resolutions than any other electromechanical timer made today. Driven by a solid state circuit, with control line input that insures .05% accuracy, these timers provide instrument level performance.

Specifications:

Display: 5 or 6 digit with reset 5 or 8 digit without reset

Digit: .160" high (each time designation has color-coded wheels for easy display)

Operating Voltage: 6, 12, 24, 48, 110VDC; 12, 24, 110, 220VAC

Accuracy: AC-based on line frequency, DC-crystal oscillator rated at .05% accuracy

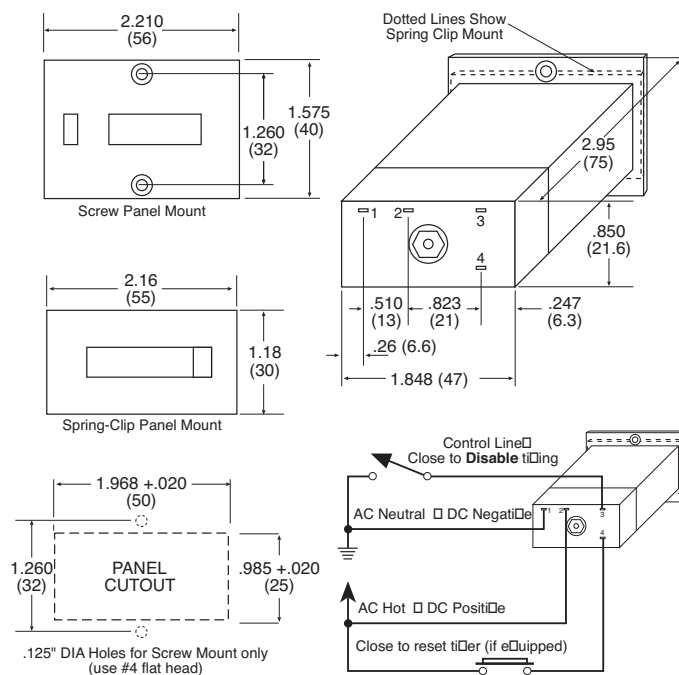
Power Consumption: 2.5 W typ., 9 W required for reset

Supply Voltage: ±10% of rated voltage

Supply Ripple: 10% maximum (DC units only)

Temperature: +32° F to +112° F (0° C to +45° C) operating

Mounting:



Multi-Resolution Elapsed Timers



How To Order

EXAMPLE:	MTH 16.	1	1	12VDC	V
Series					
AC with Reset:					
MTH16. (Hours 1/100)					
MTM15. (Minutes 1/10)					
MTS16. (Seconds only)					
MTHMS16. (Hrs, Min, Sec)					
MTHM15. (Hrs, Min 1/10)					
AC without Reset:					
MTH18. Discontinued, consult factory					
MTM17. Discontinued, consult factory					
MTS18. Discontinued, consult factory					
MTHMS16. (Hrs, Min, Sec)					
MTHM15. (Hrs, Min 1/10)					
DC with Reset:					
MLTH15. (Hours 1/100)					
MLTM15. (Minutes 1/10)					
MLTS16. (Seconds only)					
MLTHMS16. (Hrs, Min, Sec)					
MLTHM15. (Hrs, Min 1/10)					
DC without Reset:					
MLTH17. Discontinued, consult factory					
MLTM17. Discontinued, consult factory					
MLTS18. Discontinued, consult factory					
MLTHMS16. (Hrs, Min, Sec)					
MLTHM15. (Hrs, Min 1/10)					
Mounting:					
1 = Screw panel					
2 = Spring clip					
0 = Rear Mount (for F1K1 Option Only)					
Reset:					
0 = Non-reset					
1 = Manual					
2 = Electric					
3 = Manual and electric					
Voltage (specify)					
DC - 6, 12, 24, 48, 100					
AC - 12, 24, 110, 220					
Available Options:					
TB - terminal block					
V - manual reset guard					
US - spade key reset					
ML - magnifying lens					
HT - extended temperature (+32°F to +140°F)					
F1 - screw panel mount frame w/ socket box (cutout W2.15" x H1.20")					
F1DK - transparent polycarbonate cover, keylock, tamper-proof.					
F1DV - transparent polycarbonate cover, knob closure					
F1K1 - silicone cover, 0 mount style					
Enclosures:					
N4 - Weather and water proof					
N4R - Weather and water proof with Reset*					
N7 - Explosion proof					
N7R - Explosion proof with Reset*					
N12 - Oil and dust proof					
N12R - Oil and dust proof with Reset*					
* Timer must have electric reset					

TIMERS