

INFILINK-HMI

Industrial Automation Software

Features

- Free Design Mode: Only pay to unlock run-mode copies
- OPC Client Functionality
- E-mail and Web Enabled: Send e-mail and View tag data over the Internet
- Historical Trending, Alarming, Data Logging included in base price
- Email and Web Enabling included in base price
- No yearly “maintenance” or “support” fees

Description:

Infilink-HMI is a full featured solution at an affordable price. It is ideal for the small PLC user with its easy setup and run time price half that of competitive products. Machine builders and users want the benefits of a Windows based package, but are held back by the premium prices demanded by many vendors. Infilink-HMI changes all of that with the truly affordable HMI, Infilink-HMI.

Features Added to the New Version of Infilink-HMI

- OPC Client Functionality
- E-mail and Web Enabled: Send e-mail and View tag data over the Internet
- Historical and Alarm Data Logging to MS Access (MDB) Files

Other Important Features of Infilink-HMI:

- Free Design Mode: Only pay to unlock run-mode copies
- Historical Trending, Alarming, Data Logging included in base price
- Email and Web Enabling included in base price
- No yearly “maintenance” or “support” fees
- Built In Scheduler
- OPC, DDE, NetDDE & AdvancedDDE Support

Email Capable

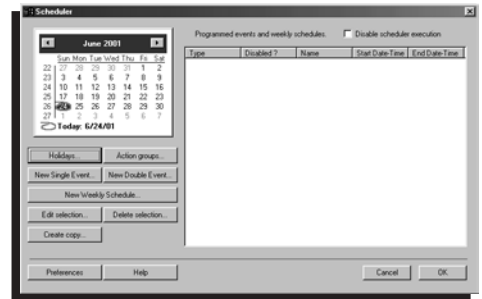
Infilink-HMI can send email messages based on alarm conditions. This can be a regular email message, or it could be sent to a technician's alphanumeric pager.



Scheduler

Infilink-HMI now includes a built in scheduler. Events can take place or tag data can be changed based on time, date, day of week, or holiday.

New events can be entered by the operator in Run mode through the calendar interface.



Infilink-HMI Communicates Using KEPServerEX

- One free driver included with Infilink-HMI purchase.
- OPC and DDE supported.
- Over 100 drivers available.
- Support for various fieldbus networks including Ethernet TCP/IP and DeviceNet.

Web Enabled

Use the internet and our Inviewer utility to view tag data. This is an especially powerful troubleshooting feature when combined with email going to an alphanumeric pager. Infilink can notify technical personnel of a problem via email, and give them the ability to obtain additional application information over the internet.



Graphic Objects and Editing Features

Infilink-HMI provides a powerful set of graphic primitives and editing features allowing you to easily depict your application's displays. All of these functions are available from our toolbox. Store your objects in libraries for reuse later or use the 2000+ library objects available with Infilink-HMI to speed your development.

Professional Library Objects

Infilink-HMI includes over 2000 professionally drawn library objects licensed from Reichard Software, famous for their Symbol Factory product. Additionally, our libraries also contain hundreds of pre-animated objects such as buttons, meters, displays, and sliders to a name few. These pre-animated objects can quickly be added to your application using the new Reassign Tags function. Drag and Drop objects out of the library into your application.



Arrange your toolbars on the top, bottom, middle, or sides of the screen with Floating Palettes.

Key Editing and Drawing Functions Include:

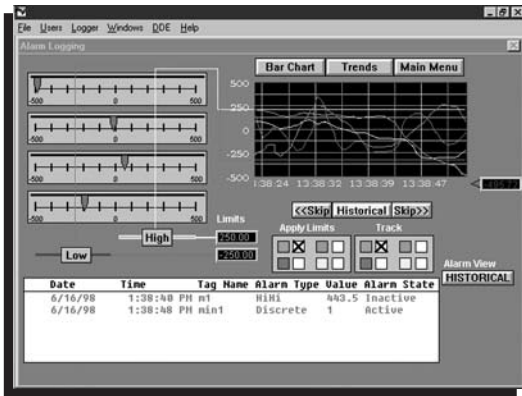
- Lines
- Polylines
- Polygons
- Rectangles
- Rounded Rectangles
- Ellipses & Circles
- Arcs, Pies, Chords
- Text
- Bitmaps
- Buttons
- Windows Metafile Import
- Alarm Displays
- Alarm Logger
- Trend Displays
- Object Grouping
- Editing of Group Objects
- Align ~ Left, Right, Top, Bottom
- Align Middle ~ Horizontal, Vertical
- Space Equal ~ Horizontal, Middle
- Rotate ~ Clockwise, Counter Clockwise
- Make Equal ~ Width, Height
- Bring to Front
- Send to Back
- Z Depth Level 1-10
- Reshape
- Rotate Shapes
- Flip Horizontal or Vertical

Key Animation Functions Include:

- Visibility ~ Show/Hide
- Change Color
- Blink ~ Fast, Medium, Slow
- Take Action ~ Activate Script
- Rotate Shapes
- Move ~ Horizontal, Vertical
- Stretch ~ Horizontal, Vertical
- Enter Data ~ Boolean, Numeric, String
- Slider ~ Horizontal, Vertical
- Show Value ~ Boolean, Numeric, String

Trend Functions

Infilink-HMI provides built-in Real Time and Historical Trend objects which allow you to quickly add time based views of your process data.



Sample Trending Application

Key Trend Functions Include:

- Multiple Plotting Modes
- Script Control
- Fast Display Speed
- 10 Pens / Trend
- Library Objects for Trend Control

Scripting Language

Infilink-HMI was designed to fit all of your needs with our built in functions. However, we have provided a powerful scripting language allowing you to tailor Infilink-HMI's operation to meet any application requirement.

Key Script Functions Include:

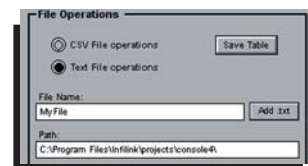
- Project Script ~ (Before, While, After) Open
- Window Scripts ~ (Before, While, After) Open
- Tag Scripts ~ On Data Change
- Conditionals ~ IF, THEN, ELSE
- Logical Operators ~ AND, OR, NOT
- Comments
- File Functions ~ Read, Write, Text, CSV
- Object Property Access
- Conditional Operators
- Full Set of Math and String Functions
- Automatic Error Checking
- Play Wave Files

Data Logging

Any Tag in Infilink's tag database can be configured to log itself to disk. Crucial events can be stored and shared with any application via industry standard database formats.

Key Data Logging Functions Include:

- User Specified Logging Path
- User Controlled Log Enabling
- Log File Change Based On Time
- Improved logging performance
- User Selectable DBASE (DBF) or MS Access (MDB) file formats.



Alarm Management and Display

Infilink-HMI provides a complete alarm management and display system available from any window in your application. Operators can view and acknowledge alarm conditions quickly using the alarm object. The Alarm History Viewer allows logged alarm events to be searched and filtered.

	Date	Time	Value	Alarm State
ACK	12/31/97	12:00:00 pm	99999999	SSSSSSSSSS
ACK	12/31/97	12:00:00 pm	99999999	SSSSSSSSSS
ACK	12/31/97	12:00:00 pm	99999999	SSSSSSSSSS

Key Alarm Functions Include:

- Limit Alarms ~ LowLow to HighHigh
- Discrete Alarms
- Selectable Priority Levels
- Custom Alarm Messages
- Selectable Filtering on History Viewer
- Automatic Printing of Alarms
- Logging of event with User ID
- Print Selected Alarm History Data

MS Access (MDB) File Logging

Use your favorite editor or report generation tools such as Excel, Crystal Reports or MS Access, to organize or analyze your data.

OPC Client

OPC (Object Linking and Embedding for Process Control) is now the standard format for industrial communication drivers. We have added OPC Client functionality to Infilink-HMI. Now you can use any of the OPC communication servers on the market with our product. We recommend using the KEPCore Extreme OPC servers, but you can use the OPC server product of your choice. Infilink also supports AdvancedDDE and NetDDE.

Other Features:

Software Based Protection

Infilink-HMI uses a software based keying system which works on any Windows operating system.

Multi-Platform Operation

Infilink-HMI runs with Windows 98SE, Windows 2000 and Windows NT.

Minimum System Requirements

Pentium 133MHz CPU
32 MB of RAM
50 MB of Free Disk Space
Display Resolution of 640x480 Run Mode, 800x600 Design Mode

Free Development System

Buy Only the Runtimes You Need

Infilink-HMI now offers our complete development system for free. When you download the latest version of Infilink-HMI (4.00 or higher) from our web site you have a complete development system. There's no limitation on the tag count. The provided runtime has a one hour expiration time. When used in combination with a demo version of our 32 bit OPC servers, you have a complete HMI system that can be used by every developer in your organization without spending a dime.

Ordering Information

Runtime Packages with the following Real I/O Tag counts are available:

128 I/O Tag Runtime **Part # KEPRUN-128**

includes 1 KEPServer driver

256 I/O Tag Runtime **Part # KEPRUN-256**

includes 1 KEPServer driver

512 I/O Tag Runtime **Part # KEPRUN-512**

includes 1 KEPServer driver

Unlimited I/O Tag Runtime **Part # KEPRUN-0000**

includes 1 KEPServer driver

Note: Internal or Memory tags are not counted as part of your licensed tag count.

Download a fully functional version of Infilink-HMI from our website at: www.kep.com