



## A DECADE OF SUCCESS AND COUNTING



Building strong and mutually beneficial partnerships is a concept that motivates Kessler-Ellis Products (KEP). As a leading developer of automation and control products and Human-Machine Interface (HMI) software, we recognize that solving challenges through technological solutions begins with great collaboration.

EPG Companies Inc., designs and manufactures leachate, gas condensate, and dewatering pump systems for over 1,500 landfills worldwide. Ten years ago, the company first partnered with KEP to implement an advanced control system at one of its sites. The solution? Infilink.

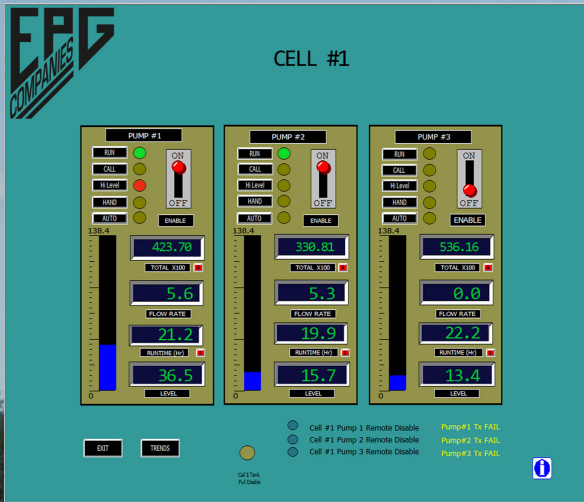
Infilink-HMI is a comprehensive, Windows-based industrial automation software package tailor-made for small to medium PLC users. Not only is the platform device agnostic, enabling integration with all brands of PLCs (Programmable Logic Controllers), but it's also end-user friendly to provide a frictionless experience for operators. In addition, the tag-based programming and extensive device library provides relatively fast interface design and programming.



## KEP's Infilink software has a solid developer interface and the best driver library I've worked with

praises the technical staff of EPG Companies.

In 2012, EPG was tasked with a project at one of the nation's largest landfills. The company was responsible for replacing several existing leachate pumps & controls with EPG equipment, including SurePump™ Sump Drainers, PumpMaster™ UL Control Panels, and electromagnetic flow meters. The new system was to include a PC software solution for remote monitoring and operation of the pump system, therefore EPG turned to KEP's Infilink-HMI software.



At the start, a total of 7 pumps with controls were installed at each landfill "cell" about 300 feet apart. EPG and KEP worked hand-in-hand to configure the Infilink system and get it fully functional. A series of controllers and radios provided the communication for level and flow data, all viewable (and in some cases controllable) from a central computer at the landfill's main office. An additional 6 pump & controls systems have since been added to bring the total to 13. Integration of the additional pumps & controls required only slight modification to the existing Infilink programming, prepared at EPG and updated on-site by EPG's technician. The system could not be easier to operate and expand, making it a solution that will serve EPG well into the future.



In addition to a superior control platform, EPG enjoys Infilink's software licensing model that doesn't require annual renewal like competing products. The system has a reasonable initial cost, making it economical and allowing EPG to pass savings onto its happy customer. The ten-year partnership between EPG and KEP has been one of mutual success, and we are excited to continue and strengthen our collaboration in the decade to come.



[www.KEP.com](http://www.KEP.com)



[www.EPGco.com](http://www.EPGco.com)